

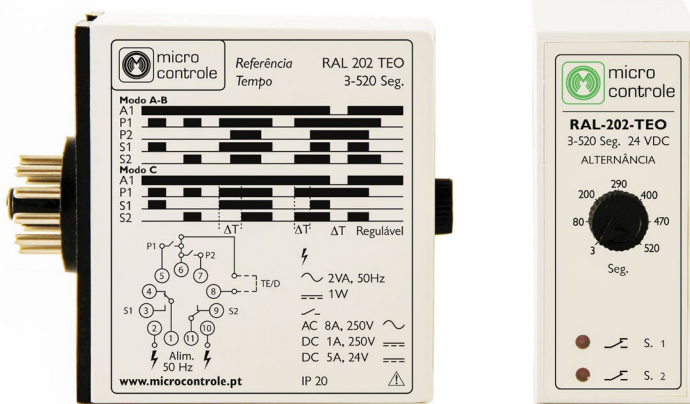
Alternating Relay



micro controle
automação electrónica, lda.

Double Motor Alternating Control Relay with Manual Timing

RAL 202 TEO



Switching relay for alternating control of two electric pumps with manual timing (3 – 520 sec.) Control signals by closing contact, pressure switch and internal timing.



Applications

Alternating control of two electropumps.

Control signals by closing contact, pressure switch and internal timing.



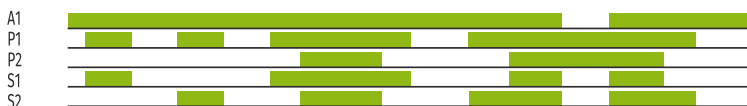
Technical Specifications

Sensitivity adjustable: [3, 520] sec.
Room temperature: [-10°C, + 55°C]
Output relay: 8A-250V / 50Hz – 1250VA DC 5A-24 V (C.R.)
Power: AC (24V, 230V, 400V) / 50Hz
Consumption: 2VA (approx.)
Supply: 12V DC, 24V AC, 230V AC, 400V AC
Fitting: 11-pin base



Operation

MODE A AND B



MODE C



MODE A AND B – (SHUNT 8-6)

During each actuation of input “P1”, alternately output “S1” and “S2”. If a “P2” action appears during the “P1” operation, it will also switch on the other output.

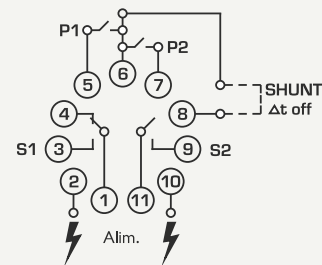
MODE C – (PRE-PROGRAMMED AT THE FACTORY)

During each actuation of input “P1”, alternately output “S1” and “S2”. If a “P2” action appears during the “P1” operation, it will also switch on the other output.

When the “P1” input remains active longer than “t” set on the front panel button (3 to 520 sec. Scale), it will switch on the available output (“S1” or “S2”). This remains on while “P1” remains active.



Connections



Order Codes

- ▶ RAL 202 TEO 12V DC
- ▶ RAL 202 TEO 24V AC
- ▶ RAL 202 TEO 230V AC
- ▶ RAL 202 TEO 400V AC